

*Timeless*  
**FENCE** Proudly Made in the U.S.A. *system*™  
*this Post **IS** the Insulator!*®

**2024 PRODUCT CATALOG**



USA Regenerative Agricultural  
Alliance Farm Campus  
Greenville, TN

# ABOUT TIMELESS FENCE SYSTEM

Plastic Innovation is an American company that is the manufacturer, marketer and distributor of the Timeless Fence System. Since 2011, the Timeless Fence System has been voted the #1 electric fence solution in the USA and foreign countries since no insulators are required. This Post Is The Insulator! The major keys to our product line are simplicity and ease of installation.

Our fencing products are extruded from scrap Rigid PVC window and door materials that have been reground, which are generally virgin materials. One of the important features of Rigid PVC material is that it can be reground up to seven times and reused as needed, hence it does not end up in landfills or the oceans.

All Timeless Fence System products are coated with UV material to protect against sunlight. Our products have a twenty year warranty. The Timeless Fence System is approved by NRCS for cost share programs in forty-eight states of the US, including Hawaii.

While farm fencing is our primary business, the Timeless Fence System is being used in gardens, vineyards, for small animal fencing and an ever-widening range of electric fence applications.

*Quality & Service are the key cornerstones of our company.*



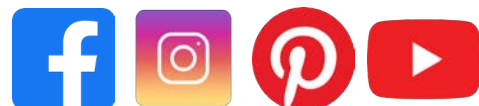
## Building a good electric fence...

is like anything else, you get out what you put in. If you use the right equipment, the result will be a useful and valuable addition to your property. The advantage of using electric or high tensile fences is that on average they cost less than a barbed wire fence, since less materials are required and they take less time to install, especially if you are using Timeless Fence System Rigid PVC posts where no insulators are needed.

Electric fences are mental barriers, not physical barriers, for all classes of livestock and grazing situations. With a well-designed electric fence system, along with the proper voltage, livestock tend to leave the fence alone once they have been shocked/trained. Training can be as easy as setting up offsets of electric tape or polywire perpendicular to the exterior fence and extending out into the field where the animals run into the wire. Animals new to electric fences are curious, and usually walk the field to determine boundaries, or may be attracted by a moving object, such as electric tape. It may take a couple of times to be shocked, but they will begin to respect the fence. Properly sizing the energizer, more commonly referred to as a fence charger, with the animal type and amount of fence to be electrified is the foundation of a respected, mental barrier fence. Oversizing is better than undersizing when deciding on the energizer.

## How it works

An electric fence energizer converts electrical, battery, or solar power into a high voltage pulse. This pulse, or more commonly referred to as the “shock”, is released to the fence line about once every second, and is felt by any animal that touches the electrified fence. Your electric fence installation is an incomplete electrical circuit. When livestock touch the wire, electrons in the wire are able to escape into the soil. The earth-ground system draws electrons back up from the soil to replace the electrons lost from the high tensile wire, thus completing the electrical circuit.



**Connect with us on social media!**

We love seeing pictures of our products in use and comments or questions from our customers.

## Need help with fence planning or estimates?

*We've got you covered!*

It doesn't matter if you are a beginning farmer or a seasoned professional, installing a new fence can be a daunting project. It doesn't have to be! Sure, there are many variables to consider and lots of materials to choose from, but by answering a few quick questions, Timeless Fence professionals can quickly help design the perfect system for all of your fencing needs.

**Step 1:** Read and answer the questions below. The more you tell us, the better informed we will be about the goals you want to achieve. If you don't yet know the answer, we can help with that, too!

**Step 2:** If you have aerial maps with the fence lines drawn out, send them to us. (Note: this can be done on Google maps.) If not, a hand drawn sketch will work just as well.

**Step 3:** Send it to us! Email the maps/drawings to team@plastic-innovation.com. Please be sure to include the physical address of the property as well as a contact phone number. This helps us get you in touch with the right representative should there be any follow up questions and also allows us to view the property on our software.

## What we need to know

**What type of livestock will you be containing?**

**Do you have a pre-determined preference on how tall you want your fence to be?**

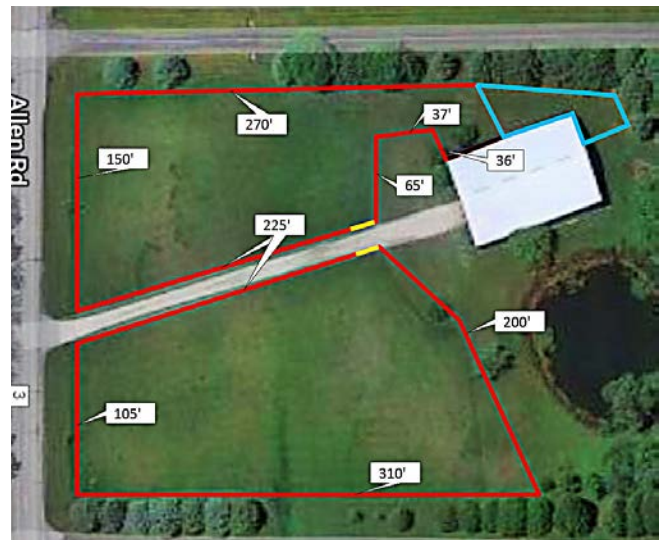
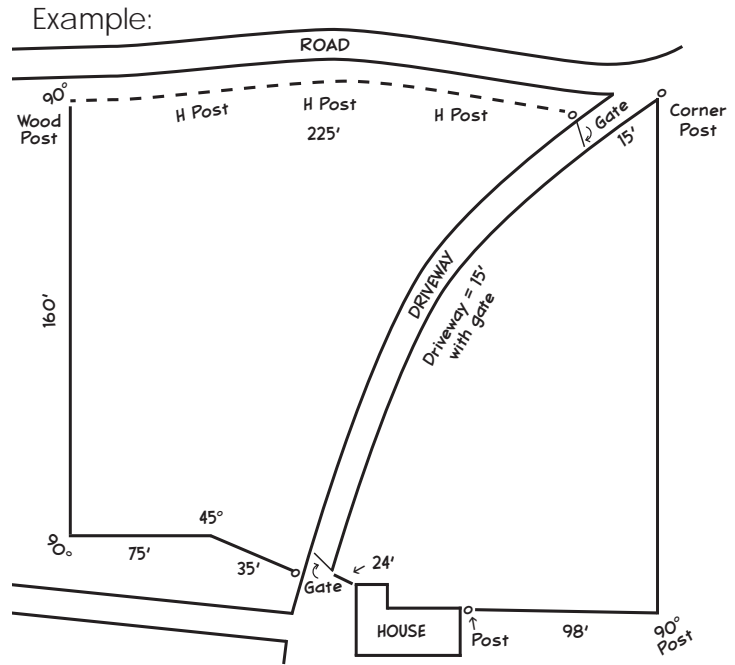
**How many strands and what kind of wire do you want to use?** When providing maps/sketches, please draw the fence lines and include the total linear footage of the entire fence.

**Indicate all corners and slight/major changes in the direction of the fence line. Also note dips, hills, and streams that may encounter the fence line.**

**Specify the material you will be using for corners/braces** (e.g. Timeless Fence System bracing, wood, steel, or fiberglass). If using Timeless Fence System bracing, please specify which style you prefer (e.g. A-Frame, Classic H, Super H)

**Mark the location of gates.** Note: wherever possible, it is more cost effective to locate gates at corners. This eliminates the need for additional bracing.

**Indicate the location of houses/barns where a fence line may be beginning and/or ending.** This is useful in determining the type of bracing needed in this location.



Red - 6 strand high tensile  
 Yellow - Gate (wire with gate handles 14')  
 Blue - Hog panel fence

**PLEASE NOTE:** Good fences take time and planning. We receive many estimate requests each day and we appreciate your patience while we devote our time to each one.

# TIMELESS FENCE RIGID PVC PRODUCTS

## Rigid PVC T-Posts

Made from recycled PVC, our posts are both strong and flexible, making them all but impossible to break under normal use. Pre-drilled holes are .375" (3/8") diameter and placed every 3" for easy wire threading.

### Choosing post size

The best way to determine the appropriate post size is first to know where you want your top wire to fall. Posts from 4' to 6.5' are designed to be installed 18" deep in the soil, posts 7' to 8' will install 24" deep. The top hole is 2" from the top of the post. For example, a 6' post at 18" deep leaves 54" to the top of the post with the top wire at 52". For a 6' desired fence height using 8' t-posts would result in 72" to top of the post and 70" to top wire. Bottom hole is 7" above ground.

For most perimeter fences we recommend the 1.75" post. The 1.5" is our most popular size for interior fences. The larger 2.125" post is best used in areas of higher strain where more rigidity is needed.

### Post spacing

Timeless Fence System recommends posts to be spaced approximately 16.5' apart, but some customers prefer to space farther or closer depending on their property.

Droppers (also known as stays) can be used when post spacings are farther apart to maintain consistent wire spacing. Droppers are not set into the ground, but are placed onto the high tensile fence wires. This can reduce the cost of line fencing without affecting the integrity of the fence.

### Post Depth

All posts 7' and above are recommended to be installed at 24" depth and all sizes 6.5' and below, the recommended depth is 18".

## What Is Rigid PVC?

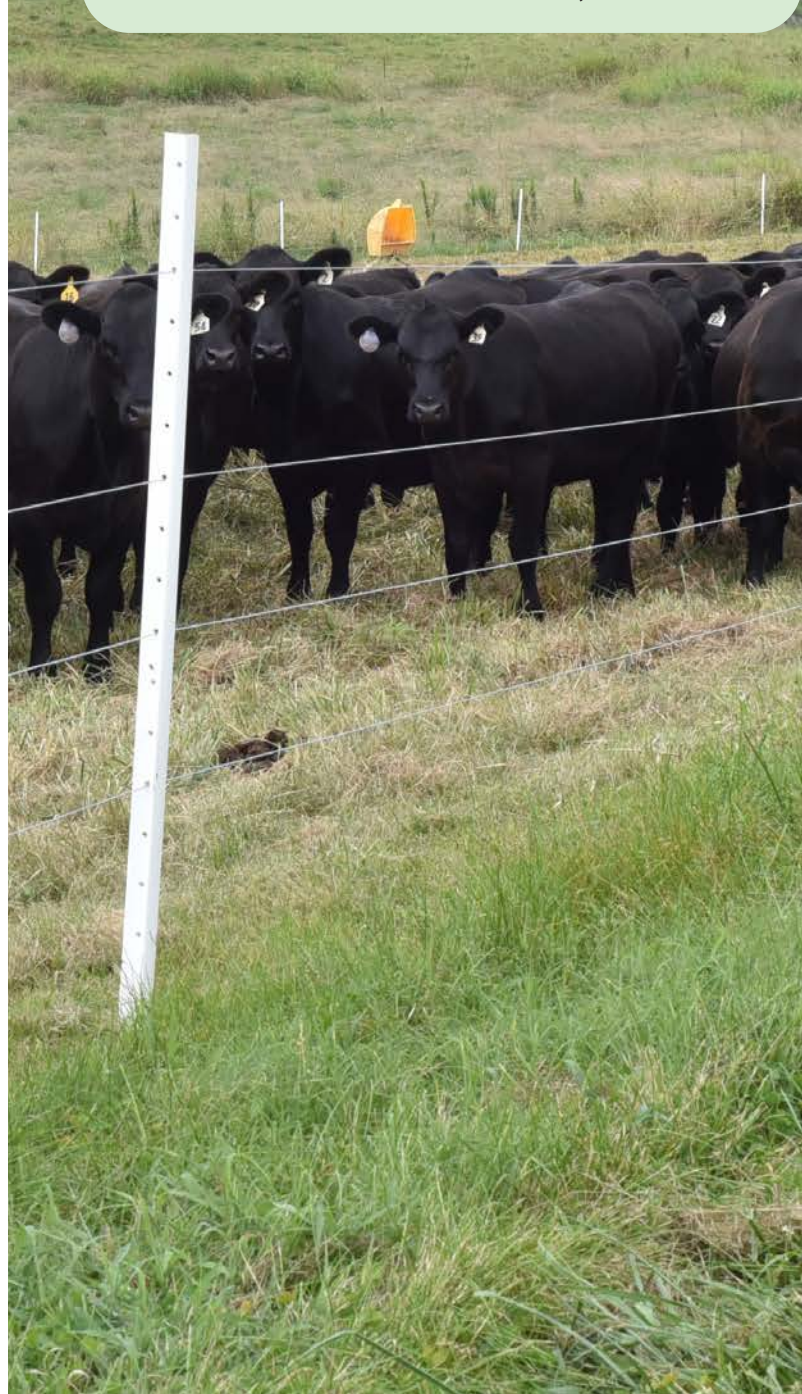
*We're glad you asked!*

We use Rigid PVC that is also used in vinyl window frames to make the Timeless Fence System. This material is ground and extruded into our posts. It is weatherable and UV protected. The life expectancy is 40+ years.



***"DON'T ever let anyone tell you that you cannot drive these posts in rocky soil, because I did it! I feel certain that these posts will be in place for many years."***  
***[After installing one hundred and fifty 6ft. Timeless Fence T-Posts in very rocky Texas soil.]***

***~ Russ Schubert - Cleburne, TX***





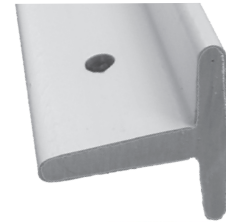
## Rigid PVC T-Post Sizes



**T-Post Dimensions:**  
2.125"x2.125"  
Wall thickness: 3/8"

### 2.125" T-Posts

8'	Installation of 24" depth recommended
7.5'	
7'	
6.5'	Installation of 18" depth recommended
6'	
5.5'	
5'	



**T-Post Dimensions:** 1.75" x 1.75"  
Wall thickness: 1/4"

### 1.75" T-Posts

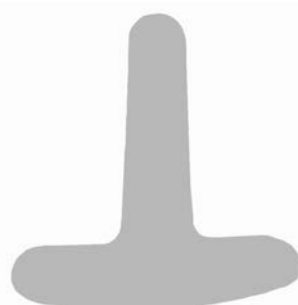
8'	Installation of 24" depth recommended
7.5'	
7'	
6.5'	Installation of 18" depth recommended
6'	
5.5'	
5'	



**T-Post Dimensions:** 1.5" x 1.5"  
Wall thickness: 5/16"

### 1.5" T-Posts

6'	Installation of 18" depth recommended
5.5'	
5'	
4.5'	
4'	

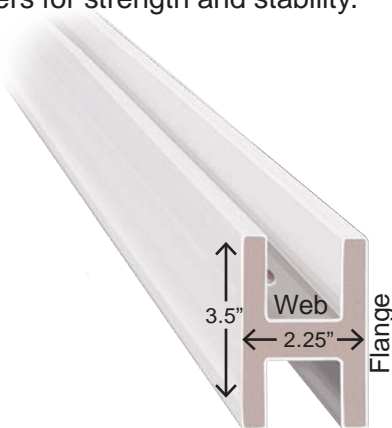
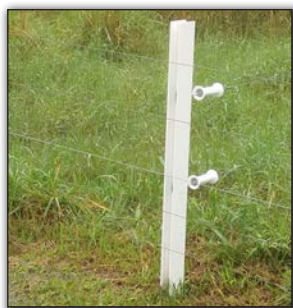


# TIMELESS FENCE RIGID PVC PRODUCTS

## Rigid PVC H-Posts

- H-Posts have a 3.5" profile with holes drilled every 3" for threading wire.
- H-Posts are also used in our braces and corners for strength and stability.

Available in 6', 7', and 8' lengths.



## Rigid PVC Droppers

Droppers (also known as stays) keep electric wires separated over long runs with less cost and labor. This can reduce overall cost of electric fencing. Droppers have a 1" profile.

Available in 40" and 48" lengths.



## Rigid PVC "Pea Posts"



Our "Pea Posts" are made by using the 48" length of 1" diameter t-posts with drilled holes at intervals to work well with the growth of the pea vines. This makes securing the pea vines easy as the plant grows, and solves the issue of having to bend over to pick the peas at harvest. Because the "pea posts" are made from Rigid PVC, the material is non-porous and therefore does not absorb moisture or harbor bacteria. These posts can also be used for green beans the same way.

# TIMELESS FENCE RIGID PVC PRODUCTS

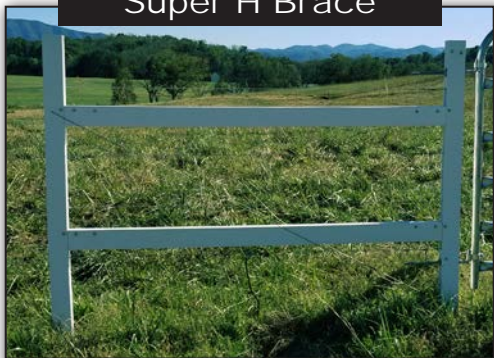
## Rigid PVC Braces & Corners

Constructed with Rigid PVC H-posts, these brace and corner systems provide an important link to creating an electric fence system that eliminates “shorts and outs.”

**Classic H and Super H braces are available in 4'w x 7'h and 4'w x 8'h sizes.**

**A-Frame braces are available in 7' and 8' heights.**

Super H Brace



Classic H Brace



New Zealander A-Frame Brace



**Corners are created by installing two braces together, creating one unit.**

Super H Corner



Classic H Corner



New Zealander A-Frame Corner



Floating Brace



We recommend vertical posts be installed in the ground a minimum of 30" using concrete mix.



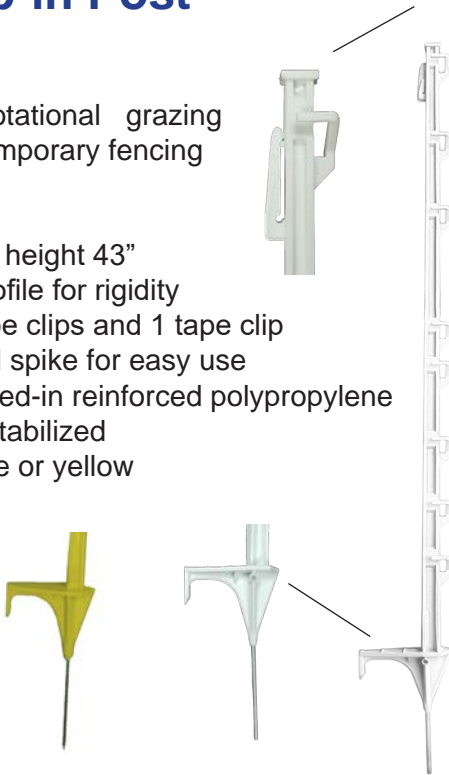
To watch a video about different types of corners, scan the QR code above with your smartphone.

# TEMPORARY FENCING PRODUCTS

## Step-in Post

For rotational grazing and temporary fencing

- Total height 43"
- H profile for rigidity
- 8 rope clips and 1 tape clip
- Steel spike for easy use
- Molded-in reinforced polypropylene
- UV stabilized
- White or yellow



Many producers who do a lot of rotational grazing create permanent paddocks with traditional fencing or electric hard wire (such as high-tensile electric wire) and then divide those paddocks with portable fencing, such as polywire and step-in posts.

The portable fence can be moved every few days or even daily (or several times daily) to strip graze or mob graze. Step-in posts are widely used as part of rotational or mob grazing.

Mob grazing is recognized as a productive way to control grasses and feed livestock healthy diets. It is a rotational pasture system in which livestock are left to graze in one pasture, but moved almost daily to another pasture.

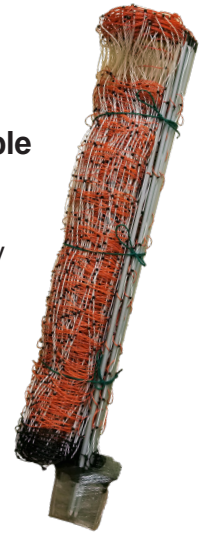
If you have questions about using step-ins for temporary fencing or rotational grazing give us a call.

## Electric Netting

Electric netting can be used for temporary containment or exclusion in multiple settings.

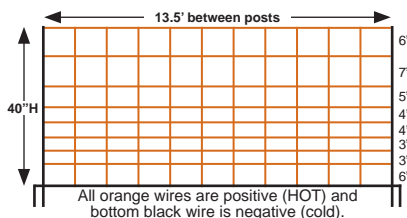
Whether you have sheep and goats, free range chickens, or want to keep wildlife away from your garden, these nets offer a simple and efficient electric fence. Nets are portable, allowing for ease of movement to different locations.

Works best with a portable solar or battery powered energizer with at least a 0.25 joule energizer for every 164' of netting used. Energizing is as easy as clipping the output lead to the net and the ground rod and you're done.



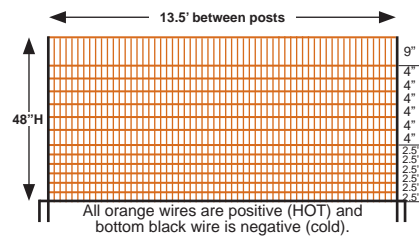
### Sheep & Goat Netting

The 7" vertical spacing is ideal for containing sheep & goats. There are 9 horizontal wires between posts. Total overall length is 164 feet.



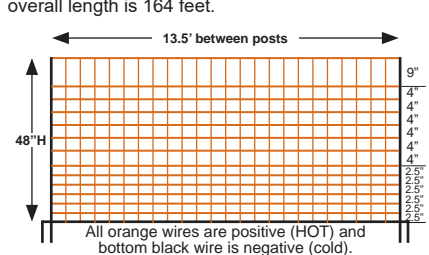
### Poultry Netting

The 3.5" vertical spacing is ideal for containing poultry and other small animals. There are 14 horizontal wires between posts. Total overall length is 164 feet.



### Predator Netting

The 7" vertical spacing is ideal for keeping predators out of gardens, beehives or small animal pens. There are 14 horizontal wires between posts. Total overall length is 164 feet.





# TEMPORARY FENCING PRODUCTS

## Fencing Wires

### Polybraid\_MM

(1,320 Ft. roll)



**Timeless Fence Mixed Metal Polybraid**  
9 Strand (6 Stainless Steel & 3 Tinned Copper) Conductors

### Polybraid\_SS

(1,320 Ft. roll)



**Timeless Fence Stainless Steel Polybraid**  
9 Strand Stainless Steel Conductors

### Max. Voltage Polywire



**549-MV (1,320 Ft. roll)**  
**589-MV (2,640 Ft. roll)**  
9 Strand Premium Stainless Steel | .20mm Conductors  
OHMS 4,400

### 6-strand Polywire



**PM 525-16 (660 Ft. roll)**  
**PM 556-16 (1,650 Ft. roll)**  
Stainless Steel Polywire  
.16mm Conductors | OHMS 12,300

### Horse Safe Braid



**1,000 Ft. roll**  
Braided Polyester Fiber with Polypropylene Core and Tinned Copper Conductors  
OHMS 40

### Nitro Braid



**1,312 Ft. roll**  
Heavy duty 1/4" polybraid constructed of 9 strands of copper and steel with highly visible red tracer and extra UV protection.

*"Just wanted to drop a line to say how happy I am with my new fence. The Timeless t-posts were unbelievably easy to install and seem very sturdy. My horse has already laid on the fence and nothing broke! I've been recommending them to everyone I know. The customer service was amazing. Brad was excellent to work with."*

~ Kristin Greener - CT

*"Great fence, easy install. Great fence for horses, very safe and forgiving. I have a 5 strand fence with HotCote wire. I could fire it up and keep a herd of elephants contained if need be. Love this fence!!"*

~ Jan Martin - TX

# PERMANENT FENCING PRODUCTS

### High-tensile wire



**2,000 Ft., 2,640 Ft. & 4,000 Ft. rolls**  
12.5 gauge Hi-Tensile Wire Class 3 | 170,000psi | OHMS 56

### HotCote



**1,320 Ft. roll**  
Coated, Conductive HT Wire - White with black stripe; 12-1/2gauge; Class 3 | 200,000psi | OHMS 56

### Underground Cable



**164' roll HD 12.5ga C3 Double Insulated Underground Cable** | OHMS 56

# PERMANENT FENCING ACCESSORIES

## Connectors, Tensioners & Insulators

### Polyrope connector

4 pack



### HD Joint Clamp

20 pack



galvanized

### Open End 3-4 Taps

50 count jar



### Rope Splicer

10 pack



### Crimp Sleeve Extra Long

Jar of 100



### T-Post Clips

25 pack



### Gripple Wire Twist

100 count bag



### Gripple Release Key



### Gripple

Available in 25 pack or 200 pack

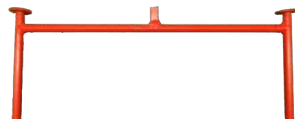


### Wheel Tightener

10 pack



### Wheel Tightener Handle



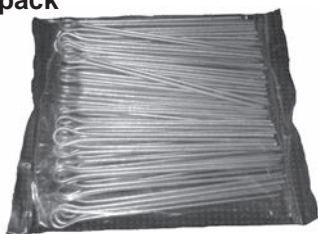
### Quick Ends

10 pack



### Cotter Pins 5 inch

50 pack



### Spring Clip Wire Strainer

10 pack



### Strainer Handle



# PERMANENT FENCING ACCESSORIES

## Connectors, Tensioners & Insulators

### Porcelain Insulator

10 pack



### Corner Lag Insulator

10 pack



### End Strain Insulator

10 pack



### HD Tension Spring

Heavy Duty - Class 3 Galvanized



### Wood Post Pinlock Insulator

25 pack



### Cutoff Switch



### Economy Gate Handle



### Spring Gate Kits



Spring Gate Kits available in 14' and 24'

## Fencing Tools

### Multi-Use Tool



### 4 Slot Crimp Tool



### Knipex Pliers



### Wire Bending Tool



3 pack

### Manual Post Driver



### Gripple Contractor Tool



### Spinning Jenny



# ENERGIZERS AND UNIGIZERS

## Speedrite Energizers and Unigizers

### 63000RS Energizer

Remote Included



63 J maximum output (97 J stored)

### 46000W Energizer

Remote Included



46 J maximum output (68 J stored)

### 18000i Unigizer



18 J maximum output (24 J stored)

### 12000i Unigizer



12 J maximum output (16 J stored)

### 6000i Unigizer

Remote Included



6 J maximum output (9 J stored)

### 6000 Unigizer



6 J maximum output (9 J stored)

### 3000 Unigizer



3 J maximum output (4.5 J stored)

### 2000 Unigizer



2 J maximum output (2.7 J stored)

### 1000 Unigizer



1 J maximum output (1.4 J stored)

### Speedrite Fault Finder



### Speedrite Remote Control



## Cyclops Chargers



- All Cyclops chargers have modular circuitry for quick and easy repair.
- Battery operated models do not include the battery.

## Electra Mfg. Charger



1-year Unconditional Warranty

# GRAZING ACCESSORIES

## Wire Reels

### Speedrite 3:1 Geared Reel



Holds up to 1640' of polywire or 656' of polytape  
Zammr handle included

### Speedrite Mega Geared Reel



Holds up to 3280' of polywire or 1312' of polytape

### Speedrite 1:1 Econo Reel



Holds up to 1640' of polywire or 656' of polytape

### Mini Reel



Holds up to 800' of polywire or 300' of polytape

### Taragate 3:1 Geared Reel



Holds up to 1640' of polywire or 656' of polytape. Handle included

### Taragate Prewound Reel



3:1 Geared reel is prewound with 1312' of 9 strand Stainless Steel Polybraid. Handle included

### Taragate Prewound Reel



3:1 Geared reel is prewound with 1312' of Mixed Metal Polybraid. 6 strands SS and 3 strands copper. Handle included

### Tarapost Reel Post



Unique free-standing reel anchor simplifies grid grazing allowing unlimited options when subdividing paddocks.

**One reel bracket included.**  
**Wire reel not included.**

### Tarapost Reel Bracket



### Zammr Gate Handle



# TITAN

POST DRIVERS

## PGD1032 Model



Includes 1", 1.75", and 2.5" steel adapter sleeves. The full barrel reducer sleeves ensure focused impact on the post material while maintaining a straighter drive. Comes with engine oil, extra grease, and tool kit and protective storage case.

- Weighs 32 pounds
- 700-1,350 beats-per-minute
- Powered by 1.2 horsepower, 4-stroke engine
- 100% self-contained
- Handles are designed for comfort
- Simple recoil pull start with trigger throttle and integrated stop button
- One-year limited warranty

## PGD3200X Model



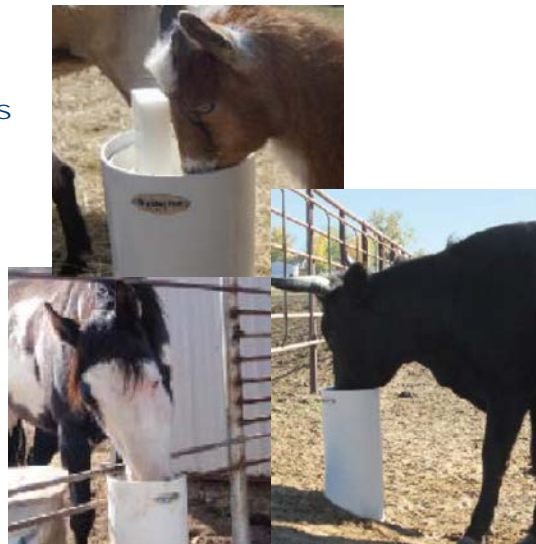
- Weighs 45 lbs.
- Offers up to 1,850 beats per minute
- Powered by Honda GX35 1.3 horsepower 4-stroke engine
- 100% self-contained
- High-quality sealed bearings and Viton O-rings for long tool life
- Handles are designed for comfort with internal dampening springs to reduce vibration
- Simple recoil pull-start with trigger throttle and integrated auto-reset stop button
- Limited lifetime warranty on the hammer
- Engine warranty provided by Honda



Size Recommendations For Animals  
**Recommended installation depth is 18" below the frost line.**

- 3' above ground - Horses
- 1.5' - 2' above ground - cattle
- 1' - 2' above ground - sheep/goats

Available in these sizes:  
**Portable Waterer: 3'**  
**In-ground Waterers:**  
 4' | 5' | 6' | 7' | 8' | 9' | 10'



# Timeless FENCEsystem™

Proudly Made in the U.S.A.

*this Post IS the Insulator!*

203 Wilson Hill Rd., Ste. 2 | Greeneville, TN 37745

(800) 788-4709

[timelessfencesystem.com](http://timelessfencesystem.com)



## Whatever type of livestock you have, whatever type of terrain you have, we have the answer to your fencing needs.



Rev. 01-24



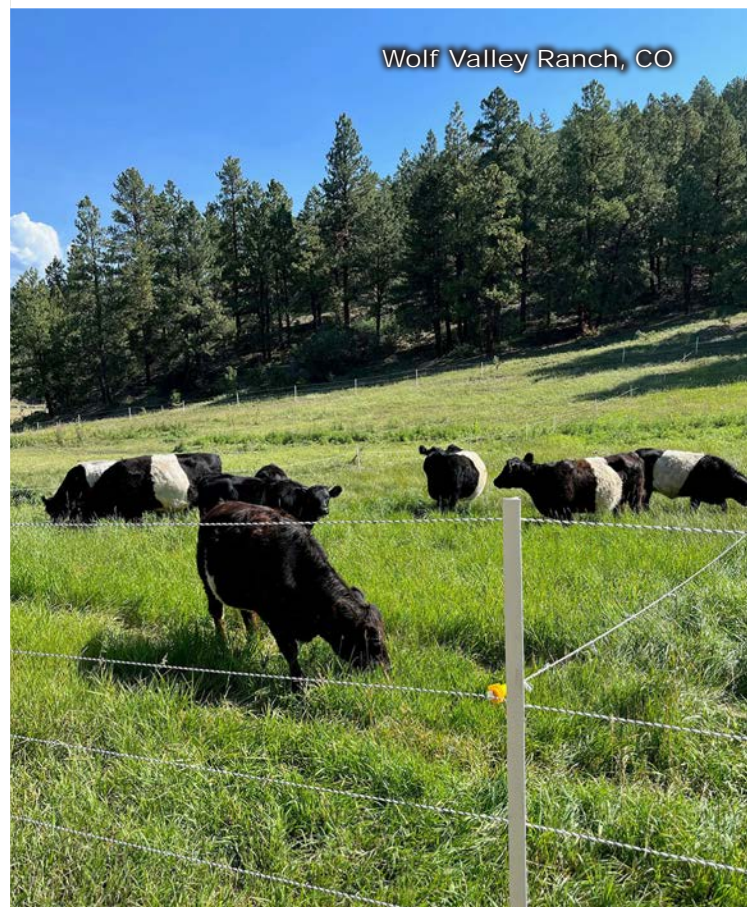
BIG SPRING FARM  
Adolphus, KY



George Heller, Verndale, MN



Shawn Glasser, Ontario, CA



Wolf Valley Ranch, CO



Mountain State Farm, Strange Creek, WV